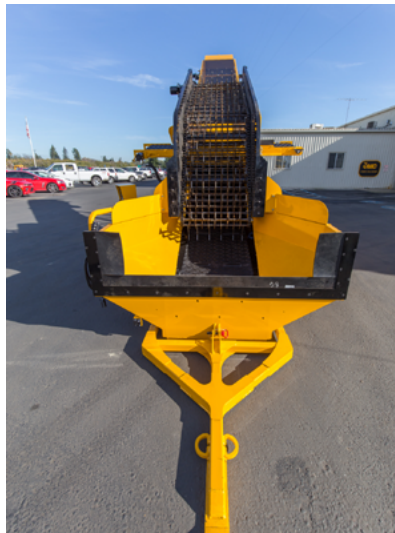


FE-36



Standard Features

36" wide belt - Giant Z Top Belt
74hp Cummins F3.8 Stage V turbo diesel engine - No DEF
Swingarm controls
LED night lights
Tow lights with turn signals
Powder coat finish
Hydraulic lift and skid plate
235/75R-17.5 tires (6,000 lb rating)
Discharge height: 14 feet, 6 inches
Length: 38 feet, 6 inches
Width: 105 inches
Towing height: 13 feet, 6 inches
Towing length: 40 feet
Fuel capacity: 40 gallons



OPTIONS

- » De-sticker with sliding stick conveyor
- » Electric brakes
- » Cleated belts (in place of Z top)
- » Leaf fan
- » Hydraulic top deflector